

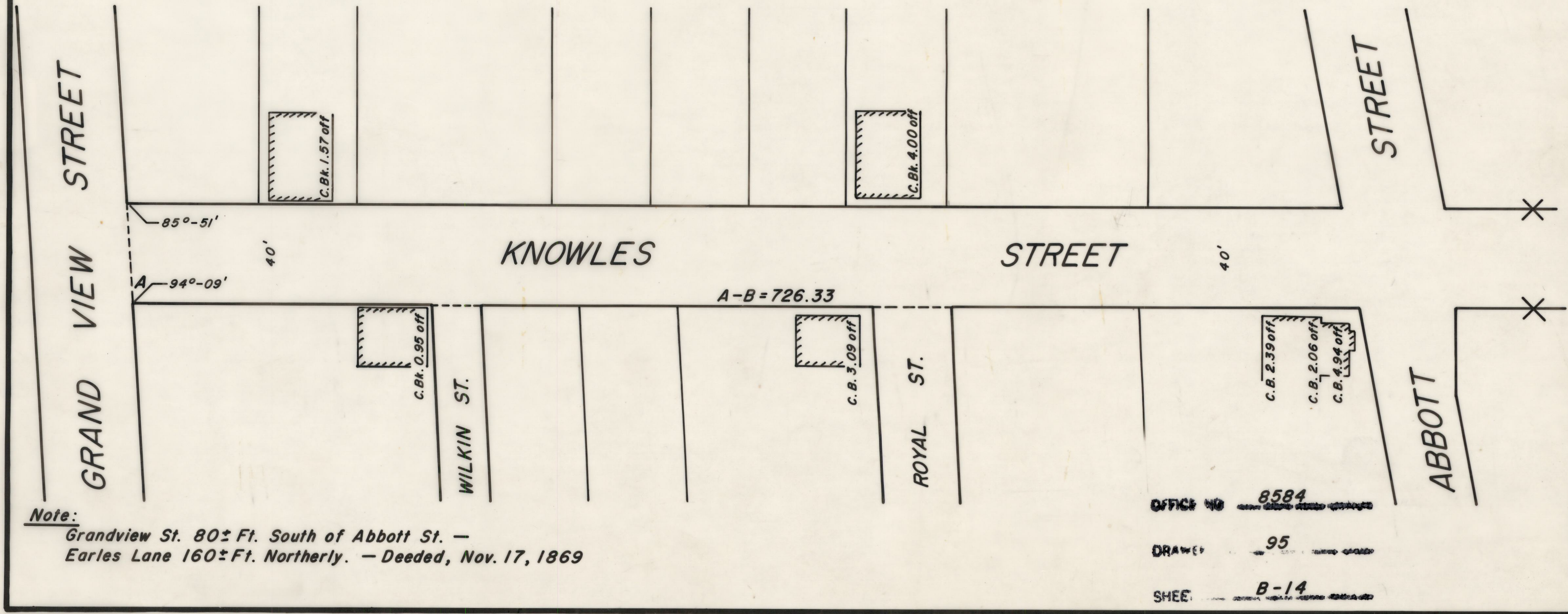
PLAT OF
KNOWLES STREET

From Grand View Street To Pleasant Street

PROVIDENCE R. I.
P. E. DEPT. - ENGINEERING OFFICE
STREET LINE SECTION
Plan No. 011292
Date Oct. 3, 1885



SCALE 1" = 40'



Note:
Grandview St. 80± Ft. South of Abbott St. —
Earles Lane 160± Ft. Northerly. — Deeded, Nov. 17, 1869

OFFICE NO. 8584
DRAWING NO. 95
SHEET B-14

Street Line Information Taken From Plan No. 95 - B-14 and
Field Books 2425/11, 2786/32 & 3103/150.

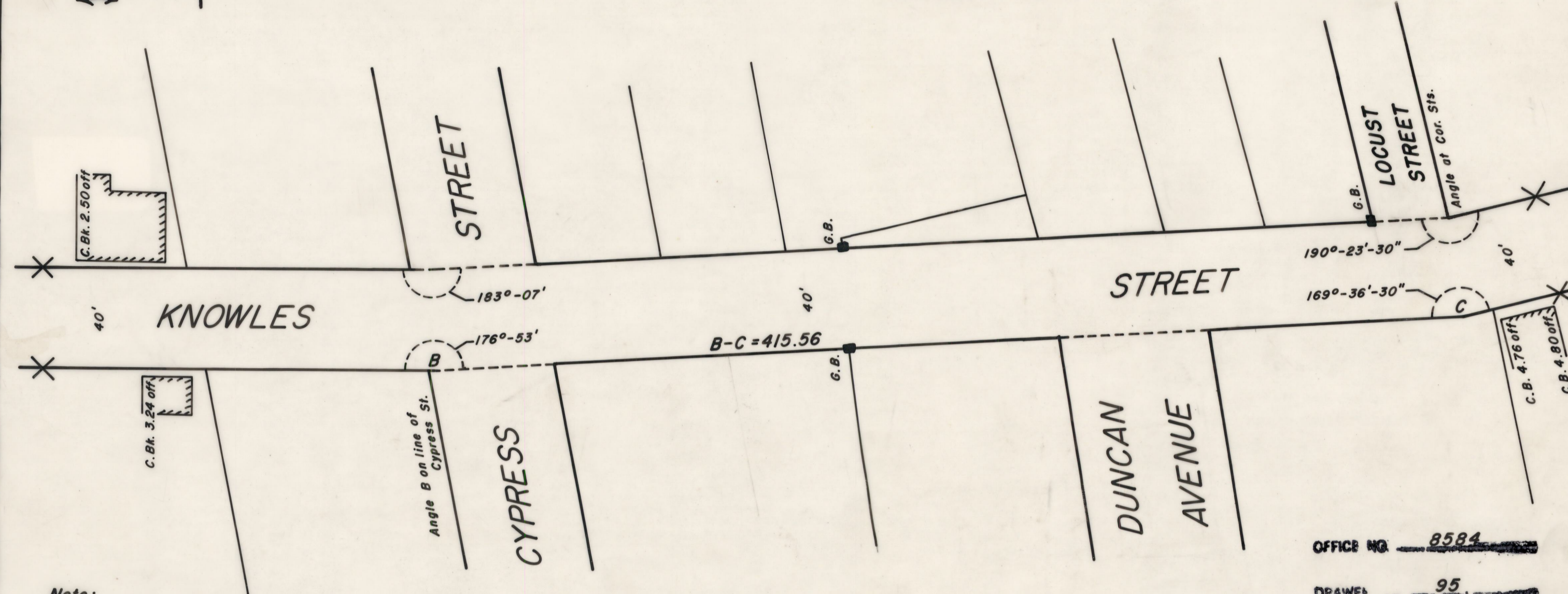
PLAT OF KNOWLES STREET

From Grand View Street To Pleasant Street

PROVIDENCE R. I.
P. W. DEPT. - ENGINEERING OFFICE
STREET LIME SECTION
Plan No. 011292
Date Oct. 3, 1885



SCALE 1" = 40'



Note:

Abbott St. to Cypress St. - Received, April 21, 1892
Cypress St. to Pleasant St. - Received, Oct. 16, 1890

OFFICE NO. 8584
DRAWN 95
SHEET B-14

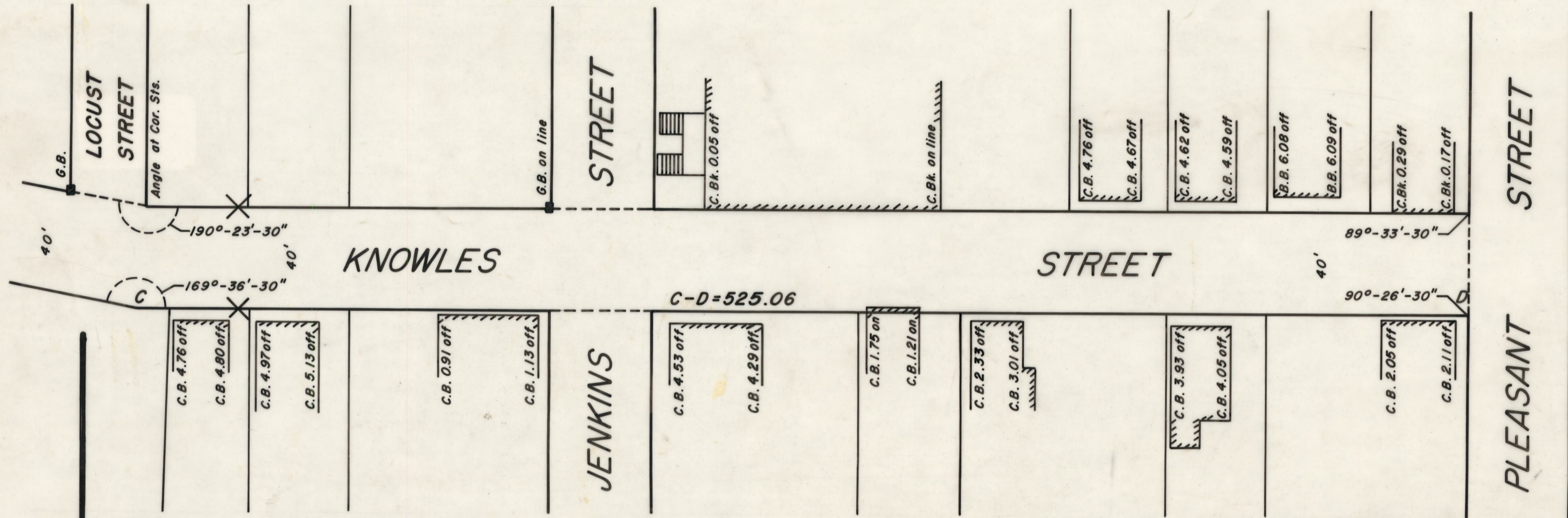
PLAT OF KNOWLES STREET

From Grand View Street To Pleasant Street

PROVIDENCE R. I.
P. W. DEPT. - ENGINEERING OFFICE
STREET LINE SECTION
Plan No. 011292
Date Oct. 3, 1885



SCALE 1" = 40'



Note:
Jenkins St. 120± Ft. Northerly - Deeded, Nov. 22, 1880
Cypress St. to Pleasant St. - Received, Oct. 16, 1890

OFFICE NO 8584
DRAWN 95
SHEET B-14